

CASTLE NEWS

Serving the community leagues of
Baturyn, Caernarvon, Carlisle, Cumberland/Oxford,
Dunluce, Lorelei/Beaumaris

December 2020



Published by Calder Publications. To advertise please call 780-918-0336 or email info@communityleaguenews.com

Holiday Toy Drive

Toys will be accepted until Dec 1st and donated to
Santa's Anonymous

EMAIL
SOCIAL@BATURYN.CA
FOR DROP OFF LOCATION

Holiday Toy Drive

Baturyn Community League will be accepting toys for Santa's Anonymous until December 1st. Email social@baturyn.ca for drop off location.

NAMING CASTLE DOWNS

THIS PARK LOCATED IN BATURYN WAS NAMED AFTER AN ORGANIST FOR THE EDMONTON SYMPHONY ORCHESTRA. HE WAS AN ENLISTED MEMBER OF THE ROYAL ARMoured CORPS WHERE HE PERFORMED FOR TROOPS AS PART OF THE STARS IN BATTLEDRESS AND HE WAS THE FOUNDER OF THE EDMONTON BOY'S CHOIR AND THE EDMONTON SELF-STARTERS ASSOCIATION.

THIS PHOTOGRAPHER, ACTOR AND JUDGE ESTABLISHED THE EDMONTON CITIZEN COUNCIL AND HAS A PARK NAMED AFTER HIM IN DUNLUCE

AFTER CHAIRING THE CANADIAN DENTAL ASSOCIATIONS ANNUAL CONVENTION IN 1988, THIS DENTIST AND SOCCER ENTHUSIAST RECEIVED THE AMBASSADOR OF THE CITY AWARD. A PARK IN DUNLUCE IS NAMED IN MEMORIAM TO HIM

THIS 1919 WAR BRIDE, AUTHOR AND RADIO BROADCASTER WAS AWARDED THE ORDER OF CANADA IN 1989 AND HAS A PARK NAMED AFTER HER IN BEAUMARIS.

HARRY FARMER PARK, ORVAL ALLEN, HERB LINK, PEGGY HOLMES

Caring for Indoor Plants During Winter Months



By the time you read this article, we'll have surely seen our first bit of snow and the mercury will be taking a dive below zero, on a more regular basis. Our outdoor gardening season has come to an end, but we still have our indoor plants to keep happy (and them, us).

One of the big mistakes plant owners make during the winter months is that they continue with the same routine of care that they did during the summer months. This is an easy mistake to make, since we spend more time indoors, it is easy to "over-love" our plants. Just remember, like outdoor plants, indoor plants need some downtime too.

Dormancy

Do plants always go dormant in winter? It re-



ally depends on the plant. Some will always go dormant in the winter, but usually for tropicals, as long as you can maintain the conditions they like, they will continue to grow and even flower throughout winter. Some cacti and orchids are actually winter bloomers.

It's not unusual though for most indoor plants to be a little lackluster during the winter months. Don't be surprised if growth slows considerably during this time.

A sign that your plant has gone dormant – The leaves drop. This can be alarming, but this is where it's key to know your plant and it's life-cycle!

Continues on pg3

Ice Rink Update

Caernarvon Community League is thrilled to announce that we will be opening both skating rinks again this year. We have a recreational skating rink as well as our newly reconstructed, full-sized hockey rink. Our wonderful icemaker and rink attendant Dean is back, bringing his skill and dedication to help make our community a fun place to be this winter.

Both rinks will be open 5-9pm on weekdays, noon-5pm on weekends. Due to COVID-19 restrictions, we do not currently have plans to open the Rink Shack with any regularity so please come dressed and ready to change into skates using our outdoor benches.

Occupancy rules will apply to both

rinks – see our Facebook page and website for more details as they are available.

Rink will close during inclement weather (-20 Celsius with wind chill, or +5 Celsius) – check our Facebook page for updates.

Season's Greetings

The Dunluce Community League Executive would like to wish everyone the very best for the upcoming holiday season and a safe and prosperous 2021.



Baturyn Community League News



Community League Board Contacts

Positions are filled on a voluntary basis.

If you are interested in board positions or would like to get involved, please contact the Board President at president@baturyn.ca to inquire about vacancies and opportunities.

Position	Name	Email
President	Tricia Stettner	president@baturyn.ca
Vice President	Vacant	vicepresident@baturyn.ca
Treasurer	Paul Petersen	treasurer@baturyn.ca
Secretary	Laura Bots	secretary@baturyn.ca
Castle Downs Rec. Society Rep.	Justin Dale	CDRS_1@baturyn.ca
Castle Downs Rec. Society Rep.	Kim Yellowknee	CDRS_2@baturyn.ca
Communications Director	Todd Lefevbre	communications@baturyn.ca
Communications Assistants	Angela Ferguson, Courtney Barnes	
Facilities Director	Earl Archer	facilities@baturyn.ca
Membership Director	Claudia Gonzalez	membership@baturyn.ca
Playschool Director	Nicole Yankee	playschool@baturyn.ca
Programs Director	Angela Ferguson	programs@baturyn.ca
Soccer Director	Candice Bevan	soccer@baturyn.ca
Social Director	Erin Atwell	social@baturyn.ca
Volunteer Director	Nicole Yankee	volunteers@baturyn.ca

Board Meetings are generally held on the 1st Monday of the Month at 7pm
July & August: No Scheduled Meetings

Baturyn Community Playschool

Very limited late registration until Dec 31 only!

We offer a fun, play-based program that builds your child's social and academic skills. Students will be introduced to the joys of learning by participating in field trips, both in and out of school. They will also take part in activities such as pre-reading, science, math, crafts, games, music, kinder-cooking and daily physical activity.

LOCATION: Baturyn Community Hall, 10505 172 Avenue

COST TO REGISTER: \$50 refundable registration fee. Registration is available on a first come, first served basis.



For 3 year olds: Tuesdays and Thursdays
AM Class – FULL
or limited spots remaining in the PM class – 12:45pm to 3:15pm

For 4 year olds: Mondays, Wednesdays, and Fridays
AM Class – FULL
or PM class – 12:45pm to 3:15pm

*Child must be 3 years of age at the start of the playschool year for the three year old class. ALL children must be fully toilet trained for any class.

Find us on Facebook by typing [www.facebook/BaturynCommunityPlayschool](https://www.facebook.com/BaturynCommunityPlayschool)

For more information, please visit our website at baturynplayschooledmonton.weebly.com or email our Playschool Director at playschool@baturyn.ca for more information on how to register.

Baturyn, Elsinore/Chambery (Castlebrook),
Canossa (Castlewood), & Rapperswill (Newcastle)
Website: Baturyn.ca or find us on Facebook

Become a 2020/2021 Member

Get your membership and enjoy the special perks of being a member.
Annual Memberships are valid from September 1st to August 31st.

Membership Fees:

Family \$25.00
Single (16+) \$25.00
Senior (55+) \$10.00
((\$5 service fee applies to purchases made through efcl.org or Servus Credit Union)

Membership Benefits:

- Access to community hosted events
- Free Access to all Community League ice rinks (with skate tags)
- Community League sports programs
- Free access to community swim times at the YMCA (Saturdays: 5:00 pm - 8:45 pm), Grand Trunk Fitness & Leisure Centre (Fridays: 7-9pm, Sundays: 4:15pm-5:45pm & Wednesdays: 8am-10am), O'Leary Fitness & Leisure Centre (Saturdays: 3:45pm - 5:45pm) and Londonderry Fitness & Leisure Centre (Sundays: 4:15pm-5:45pm)
- 20% discount on City of Edmonton Recreation Facilities Adult, Family, Child, and Youth/Senior annual passes or continuous monthly passes. 15% off Multi-Pass purchases. To learn more please call 311 or visit www.edmonton.ca/wellness
- 30% off all Cloverdale Paint products and up to 20% off all sundry items.

Memberships are required to access programs offered by your Baturyn Community League.

Get your membership today by going to EFCL.org or your local Servus Credit Union.
Your membership fees help support the delivery of various community programs and events.

Baturyn Neighbourhood Renewal

Baturyn has been chosen for neighbourhood renewal. Planning and design is currently underway with construction anticipated to start in 2023.

Neighbourhood renewal rehabilitates roads, replaces street lights, sidewalks, curbs and gutters, and adds missing sidewalk links where possible. Other opportunities to improve how people walk, bike, drive and gather in the neighbourhood, and how they enjoy City-owned parks and open spaces are also explored.

Alley Renewal will be included as part of the Baturyn neighbourhood renewal. It involves alley reconstruction and repaving, and improvements to drainage.

A series of opportunities for you to provide input and feedback into the renewal of your neighbourhood are being planned. For information, to sign up for news and updates and to provide feedback as we move through the renewal process, visit edmonton.ca/BuildingBaturyn

To learn more visit:
edmonton.ca/BuildingBaturyn

SHARE YOUR VOICE
SHAPE OUR CITY



Castle Downs Community Garden

Would it be great to establish a community garden in Castle Downs? Tentatively by the Walmart near the Henday. I am seeking like minded gardeners who would like to assist me in getting this project off the ground. Interested parties can contact me on Facebook or Twitter @DeakMusings



Ad paid for by Thomas Deak and Friends @DeakMusings

Continues from pg3 Some plants such as Oxalis and Alocasia can regrow from their tubers in the spring, so keep your plant in whatever conditions it normally likes (keeping in mind to adjust watering routines for the winter months) and come spring you should see new signs of life!

Watering/Feeding

During the winter months, it's a good idea to take it easy with the watering. During winter months most plants do not require the same level of moisture that they would during the summer months. It should also be mentioned that you should hold off with fertilizing too. During winter months, plants are in a resting phase and fertilizing can upset the natural growth cycle of the plant, which includes a period of rest.

Conditions

Another aspect of indoor plant care that you may want to reassess during the winter is your indoor conditions. It's typical during the winter months for the humidity to drop, along with temperatures. For some plants this isn't big issue, but for some plants that require extra humidity and warmer temperatures, you may need to supplement by adding a humidifier and keeping an eye on the temperature in your house. I recommend purchasing a simple humidity and temperature reader (link below). Don't forget to check your windows. Drafty locations may not serve your plant well. There are window insulation kits you can purchase that should help with this (link below). The film is easy to apply, and it makes a world of a difference.

Happy Planting, *Jerri Rumbolt*



Skip the Depot

Support Baturyn Community League with Skip the Depot app. They will pick up cans, electronics and more. You can even schedule pick-up so you don't need to go to the depot!

Baturyn Park Rehabilitation

The Baturyn Playground Committee has been meeting on a regular basis to determine the Vision and Needs of the Baturyn Park which includes the Baturyn playground. We have a fantastic opportunity to align with the City of Edmonton renewal project to create significant improvements in the entire Baturyn Park and make it the place you

want.

If you are asking "How can I contribute?"

- Tell us your thoughts on the park by completing the survey at <https://bit.ly/3mbsdSS>. It will remain up till end of November, so ask your Baturyn neighbours to contribute feedback.
- Become a part of the Committee.

FIND US ONLINE!

Want to know what's going on in your community?
For community announcements and event information see:



www.baturyn.ca



www.facebook.com/BaturynCommunityLeague



[Baturyn_Community_League](https://www.instagram.com/Baturyn_Community_League)



#BCLYEG

There are several roles that need filling.

• Complete the City of Edmonton Renewal Survey at https://www.edmonton.ca/transportation/on_your_streets/baturyn-neighbourhood-renewal.aspx

If you have questions or wish more information please email the committee at playgrounds@baturyn.ca

Bingo proceeds from our January 17, 2021 (Sunday) and February 2, 2021 (Tuesday) bingos have been offered to the playground committee if they are able to fill all 14 volunteer positions required. If you are able to help with this fundraising opportunity please contact Nicole at volunteers@baturyn.ca



CASTLEDOWNS Dental Centre

Dr. Tarek Tarchichi
www.castledownsdentalcentre.com
780-456-2990
11816-145 Ave

**New Patients Welcome.
Emergency & Walkins.
Apointments Available
Gentle Dentistry for
the whole family.**

Dental Centre Hours

Monday to Friday 8 am to 5 pm
Saturdays 9 am to 4 pm
We are closed on Sunday & Public Holidays

At Castledowns Dental Centre, We are more than glad to offer you the following services:

- Root Canal Treatment
- White Fillings
- Wisdom Tooth Extractions
- Partial Dentures
- Dental Implants
- Sedation
- Crown & Bridges
- Veneers
- In office Zoom Teeth Whitening

We Accept:

Nominate a Neighbor

Nominate your favorite holiday yard

Baturyn
Canossa
Chambery
Elsinore
Rapperswill

Top 3 Nominations from each neighborhood
will be posted on the Baturyn Facebook
page for voting

Nomination cut off: Dec 11th

*votes will be tallied and winner will be
announced Dec 14th*

Prizes are TBD



Baturyn Ice Rinks



We are looking for more volunteers to help with our rink! Baturyn will be nearly the only free rink in the Castledowns area this winter and with COVID-19 restrictions, we need more people to open more times with small groups. Please help your community with a couple hours a week! Help with the ice, the skate times etc! Please message us or email rink@baturyn.ca

Help keep our neighbourhoods safe!

Report all suspicious activity to EPS. Write down any many identifying details as possible – such as car make & license plate, what a person is wearing – to include in your report.

Holiday Yard contest

Nominate your favourite holiday yard for each of our neighbourhoods – Baturyn, Canossa, Chambery, Elsinore, and Rapper-swill. The top 3 nominations from each neighbourhood will be posted on the Baturyn Community League Facebook page for voting by the community. Nomination cut off December 11th. Votes to be tallied and winner announced December 14th. Prizes TBD.

Baturyn's Neighbourhood Renewal

Baturyn has been chosen for neighbourhood renewal through the City of Edmonton's Neighbourhood Renewal Program. Planning and design is currently underway with construction anticipated to start in 2023. As part of the renewal process, we want to hear from you. Share your feedback and perspectives on the best ways to communicate and engage with you, your neighbours and the members of your community. A survey is available on Baturyn's project site and we ask that you take a few minutes to fill it out. A walking tour and feedback package is also available near Baturyn hall. Your input will help us to refine a unique Public Engagement and Communications Plan for the renewal of the Baturyn Neighbourhood. Stay tuned for more engagement opportunities and please subscribe to our Baturyn mailing list on the project's website: edmonton.ca/BuildingBaturyn

Playschool Still Seeking Used E-readers

Our Community Playschool is still looking for gently used Kobo e-readers for their classes this year. If you or someone you know is willing to donate, please contact playschool@baturyn.ca



Caernarvon Community News

Caernarvon Community League Executive		
14830 - 118 Street NW, Edmonton AB		
Phone or Text (780) 456-3435		
President	Jennifer Schell	president@caernarvon.ca
Vice President	Jason Desnoyers	
Treasurer	Teena Burrell	treasurer@caernarvon.ca
Secretary	Kati Hutt	
Bingo	Lynne Hellyer	
Casino	D'Arcy Sommer	casino@caernarvon.ca
CDRS	Danny Burrell	
	Jennifer Schell	
Communications	Rochelle Harasimov	
Equipment	D'Arcy Sommer	
	Giovanni Borrelli	
	Sandy Reda	
Hall Maintenance	Ahmet Kaplan	
Soccer	Jason Desnoyers	soccer@caernarvon.ca
Social	Kati Hutt	social@caernarvon.ca
Programs	Sid Sadik	programs@caernarvon.ca
Signs	Kody Overacker Alanna Niehaus	
Hall Rental Director	Danny Burrell	rentals@caernarvon.ca
Membership	Amanda Meyers	membership@caernarvon.ca

Ice Rink Rentals

We are offering our Hockey Rink for rental this year. Please note that Government of Alberta guidelines apply to all rentals: Cohort sports teams are allowed 50 participants; Shinny or other unstructured activities (ie, birthday party) are allowed 15 participants. Occupancy rules may vary as GOA regulations change. Rental Rates: \$60/hr for members \$75/hr for non-members \$25 (cleaning fee) for use of skate shack – restrictions on use apply. Call 780-456-3435 or rentals@caernarvon.ca for availability. Contact membership@caernarvon.ca for a membership.

Casino Update & Volunteers Needed

Caernarvon Community League has a casino scheduled for January 19-20, 2021. This past year has been difficult for everyone's finances, even ours. If you can help us out by volunteering for a shift, we'd love to have you. Volunteers receive Caerny Bucks valued at \$100 towards any recreation activity. Please send an email to president@caernarvon.ca if you can help us.

Hall Rentals

Due to the COVID-19 pandemic, Caernarvon Hall has made the difficult but responsible decision to close for rentals. We will post any change in this status on our website, Facebook page, and Hall sign, so please continue to look for updates as

we move forward through these challenging times.

President's Message

It's hard to write a message when you know that things are going to change between the moment we submit to the publisher, and the time it is seen by readers. We've had to make some changes at Caernarvon – we have closed to hall to rentals, for one thing. As we watch the numbers spiral upwards, we cannot justifiably keep open, knowing that we may be contributing to the problem. But that doesn't mean that you have nothing to do in your neighbourhood! We built a new-to-us rink to go with our old recreation rink, and gosh darn it, we're going to flood them! Opening date is contingent on weather of course, but our icemaker extraordinaire Dean is hard at work already. In the meantime, let's focus on a couple of things that we know are going to be the same by the time you read this in December. Shop local, if you can! Our small and local business owners are suffering. It's the holiday season – consider supporting them while you are looking for gifts. Don't know where to start? The Northside Hub Facebook page has some terrific suggestions, as does Adopt A Shop YEG (the initiative will be over by the



end of November but the list of businesses will remain for your reference). The exhaustion is real, but don't give up! Complacency is a bad, bad word. We are inundated by COVID news and pandemic statistics, and are all suffering fatigue. But that's when the mistakes happen and we run the risk of making this situation worse. Stay

strong, be smart, and listen to the science. As a community, we can support each other. If you're able, offer to help your neighbor. If you're not, don't hesitate to ask for help yourself. Remember a conversation from six feet away is still a connection. Our health workers will thank you. As always, stay safe and be kind.

Carlisle Community League News



Carlisle Community Executive List

Position	Filled By	Contact
President	Krista Hennigar	780-951-7627
Vice-President	Heather Magnes	780-903-3583
Treasurer/Grants	Myer Valeriano	780-907-1198
Membership	Jolene Reinhardt	780-819-0236
Secretary	Tara Pohl-Gobeil	780-218-3399
Buildings and Grounds	Jeff Reinhard Rob Jarowka	jrrhino79@gmail.com
Volunteer Co-ordinator	Krista Hennigar	780-951-7627
Casino Chairperson	Krista Hennigar	780-951-7627
Soccer Director	Rob Lewis	carlisesoccerdirector@gmail.com
Program Director	Diane Neiman	780-457-6239
Variety Show Representatives	Sharda Persaud Sharla Sagert	780-340-7313 780-717-3689
CDRS Representatives	Kerri-Lynn Parker Melora Westman	780-554-7037 melora63@live.ca
Social Director	Kara Henebury	780-995-2444
Newsletter/Facebook	Maira Hennigar	780-616-3898



Hall Rental

**Members \$300 and
Non-Members - \$350**

**Rental Inquiries Please
Call 780-457-1090**

Carlisle Membership

Download our FREE APP 'CommuniBee' on your smart device to purchase our membership or contact Jolene Reinhardt - call or text - 780-819-0236 or email jolenereinhardt@gmail.com

Membership benefits include:

- Reduced rates to City of Edmonton Rec. Facilities
- FREE skating at any outdoor Community

League rink.

- University of Alberta (Software Education, large format printing, bookstore)
 - Discounts at Acclaimed Heating & Cooling, Cloverdale Paint, House of Wheels, Orbis Sports, Urban Poles, Yardley (snow removal)
- Please see efcl.org for more information about discounts available.

YOGA CLASSES

For anyone who wants to stretch and learn basic yoga postures ending with relaxation. Beginners are welcome.

Thursdays, 7:00-08:00 pm

Prepaid registration is \$40.00 for 10 weeks. There will be no drop-ins at this time.

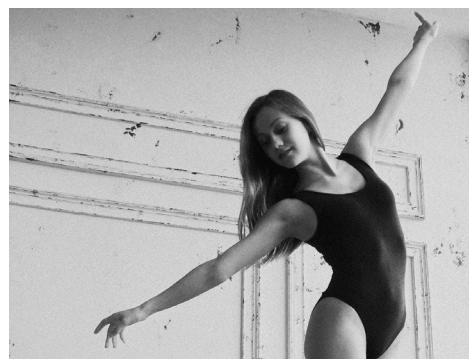
Following COVID-19 safety protocol guidelines.
Yvonne - YAA Certified Instructor

NOTE: Yoga classes have been temporarily cancelled until 2021 due to the new COVID-19 guidelines.

GYMNASTICS

There will be no Gymnastics classes at this time due to COVID-19.

For all programs, you will require a yearly membership from a community league within Edmonton or you can purchase a yearly membership from Carlisle Community League at a cost of \$25.00. If you have any suggestions or questions about Programs, please call Diane Neiman, Program Director at 780-457-6239.



Marrazzo Law Office

**10%
OFF
WITH
THIS AD**

- Wills • Notary
- Enduring power of attorney
- Personal directives
- Mobile visits available

**Call today
780-756-5500**

9535 135 Avenue (by Northgate Mall)

Denture Specialist - Over 35 Years Experience

Londonderry Denture Clinic



FREE CONSULTATION

M. Lucyshyn DD

R. Lucyshyn DD

780-476-2529

- New dentures in one day
- Repairs in 30 minutes
- Emergency after hours appointments

**SENIORS
Ask how you
may receive your
dentures
AT NO COST
TO YOU***

*Some conditions and restrictions apply.

www.londonderrydentureclinic.com 13594 Fort Rd. Northeast Edmonton

WEISS-JOHNSON
HEATING, AIR CONDITIONING

House Too Cold?...We Can Fix That!

If it's time to replace your home's furnace Weiss-Johnson has the experience and expertise to ensure it's installed right!



DAIKIN
COMFORT FOR LIFE

**Daikin high efficiency furnaces
carry the industry leading
12 year parts limited warranty.**

**DON'T PAY FOR
12 MONTHS!****

**Receive a complimentary duct
cleaning with the purchase
of a new furnace.**

**Call Weiss-Johnson today!
780-463-3096
weiss-johnson.com**

* Complete warranty details available from your local dealer or at www.daikincomfort.com.
To receive the 12-year Parts Limited Warranty, online registration must be completed within 60 days of installation. Online registration is not required in California or Quebec.

**conditions may apply

Want Maximum Tax Benefits?
CN Tax & Accounting
(Trusted & Top Three Best Rated Accounting Firm)

Personal Tax
Corporate Tax
Bookkeeping
Payroll & ROE
GST Filing
Tax savings

780-289-3870
my_accountants@yahoo.com
www.cntaxaccounting.wordpress.com

Consultation free

ThreeBest Rated
 Best Business of 2020
 Excellence



Merry Christmas
 AND **Happy New Year!**

MICHAEL COOPER MP
 ST. ALBERT-EDMONTON

20 PERRON STREET, SUITE 220, ST ALBERT, ALBERTA T8N 1E4
 MP@MICHAELCOOPERMP.CA • MICHAELCOOPERMP.CA • 780-459-0809

One Step Learning
 Opportunities Centre
Play Elevates Talents and Abilities!

Email
 contact@onesteplearning.org
Web
 www.onesteplearning.org
Phone
 780-717-4055, 780-953-4944

Give the gift of caring to a rural children's daycare in Africa this holiday season and in the new year.

An Edmonton charitable foundation is creating learning opportunities for rural children in Ghana. Support early childhood education one town at a time. Thank you for your time and generosity.

Send tax deductible cash or in-kind donations to:
Taxreceipt@onesteplearning.org

For in-kind and cash donations list, visit website:
www.onesteplearning.org

Edmonton Office Address
 15219-44 Street NW,
 Edmonton, AB, T5Y 3C4
 Canada

Ghana Daycare Location
 1 First Light Entumbil, C/R,
 Ghana, West Africa.
 Digital GPS: CJ0059-2254



MERRY CHRISTMAS

Here is a quick recap of what I've worked on at City Hall:

- Pushed for 1% tax decrease
- Cut middle management
- Ward budgets reduced by 10%
- Voted against 40km/h speed change
- Enhanced the snow removal plan

-Jon Dziadyk Ward 3 Councillor

jon.dziadyk@edmonton.ca (780) 496-8128



FIND
6
DIFFERENCES



From my family to yours,
wishing you a
Merry Christmas and
Happy New Year!

Nicole Goehring

Nicole Goehring
MLA Edmonton - Castle Downs

Grannies Tackle Tech



A group of Edmonton-area grandmothers raise awareness and funds for grandmothers in Africa who are raising their orphaned grandchildren due to the AIDS pandemic. Due to COVID-19 they have moved their one day craft sale online. Visit edmgrandmothers.org for a wonderful selection of Christmas, birthday and "gift to yourself" handmade items! Over 200 unique items with new, original, one-of-a-kind items being added almost daily...advent calendars, baby clothes, kitchen decor, quilted wall hangings, wraps, scarves, hats, mittens, totebags and more! Shop safely and securely knowing you are supporting a great cause. Curbside pickup is available in West Edmonton and Sherwood Park. All profits from online sales go to the Grandmothers to Grandmothers Campaign, Stephen Lewis Foundation stephenlewisfoundation.org.



Maze Game!

How do I know what items come with the house I want to buy?

I just bought a house, and on possession day, I noticed the movable island from the kitchen, which I loved when I viewed the property, was gone. Was the seller allowed to take it with them?

The short answer is yes, the seller was allowed to take the movable island with them. A movable or detached island is an example of an unattached good—these are movable items that are not included in the sale of a property unless agreed to, in writing, by the parties.

Unattached goods include items such as wall art, area rugs, non-built-in appliances such as microwaves, and even curtains. Unless otherwise agreed to, sellers can take movable items from the property before the buyer takes possession.

The opposite of unattached goods are attached goods. Attached goods are items that you cannot remove from a property without causing damage to the property. For example, chandeliers, built-in appliances such as dishwashers, and curtain rods and brackets are attached goods. Unless otherwise agreed to, sellers are expected to leave attached

goods behind.

However, the good news for buyers is, if there is something you like in a property you are considering buying, but it's an unattached good, all is not lost. If you want a particular unattached good included in your purchase of the property, list it as an inclusion in your offer to purchase. Now, it's subject to negotiation between you and the seller.

The seller may agree, or they may remove it from the list of inclusions in a counter offer. It is up to the buyer and seller, with the help of their real estate representatives, to negotiate the transaction, and that includes what items are included or not.

When it doubt, write it out. This is the best way to ensure you know what is included when you're purchasing a property. For larger more expensive items, you may wish to include the make, model, and serial number. This may eliminate a seller's urge to switch nice appliances, for example, with less expensive, used items.

Now, what do you do in the event the seller was supposed to leave something behind, but didn't? If you don't find out until after pos-



session, you need to call your lawyer as it is now a legal issue between you and the seller. Your real estate professional can attempt to discuss the matter with the seller's representative, but if things aren't fixed to your satisfaction, your only recourse is to speak to your lawyer.

"Ask Charles" is a question and answer column by Charles Stevenson, Director of

Professional Standards with the Real Estate Council of Alberta (RECA), www.reca.ca. RECA is the independent, non-government agency responsible for the regulation of Alberta's real estate industry. We license, govern, and set the standards of practice for all real estate, mortgage brokerage, and real estate appraisal professionals in Alberta. To submit a question, email askcharles@reca.ca.



History of Cumberland/Oxford Community League

Cumberland /Oxford Community League grew out of the Cumberland Park Society (incorporated in 2000). After successfully building a Play space on the Cumberland Park site and gleaning volunteers from the neighbourhood, the League began to offer programs and sports. Today the League is one of the largest in areas in Edmonton.

The Cumberland Oxford Community League encompasses the Pembina, Hudson, Cumberland, Carlton, Oxford, and Albany communities. The league has partnered with the City of Edmonton and the Province of Alberta to plan, fundraise, and build 3 plays places and a spray park. This fall saw the completion of the outdoor ice rink in co-operation and contribution by the Hilwie Hamdon

Public Elementary School.

The current board wishes to recognize the contribution to our Community by the late Jean Deslaurier. He and his family lived in our Cumberland community for many years. He stepped up to be President about 10 years ago. His enthusiasm and appreciation for volunteerism steered the league through several building years! His long history with the Shriners and Masonic Lodge built many relationships, programs, and friendships. Thank-you, Jean and your family is in our thoughts and prayers.

If you would like to find out more about the board and its plans' contact the secretary at secretary@cocl.org for an E-invite to our next virtual meeting.

Let's keep our neighbourhood SAFE

With the Christmas season coming and people doing more online shopping the thefts will now be happening more and more everyday.

We encourage everyone to get to know your neighbors, get to know who should be in your neighborhood and who shouldn't be. It is up to us to keep our neighborhoods safe for our friends and families. To report all crimes, suspicious activities or people in your neighbour-



hood, you can call the non-emergency line 780 423 4567.

Bingo Director

Cumberland/Oxford Community League is looking for a Bingo Director. Bingo Director will work with Bingo Assistants to organize volunteers, assign positions, count money and ensure that bingo events run as smoothly as possible.

COCL typically runs 12 bingos a year. At

each bingo, either the director or an assistant will need to be at the hall for 4:30 pm, staying until the paperwork is balanced at the end of the event, usually a little after midnight. In addition to counting as a volunteer commitment this position is entitled to COCL bucks as well.

Sign Coordinator

COCL is looking for a Sign Coordinator for Hudson and Cumberland park.

Please contact COCL secretary at secretary@cocl.org if you interested or would like to get more information about Sign Coordinator position.

The Hudson rink

The Hudson rink is almost ready - stay tuned for more information.

Most Current updates can be found on COCL Facebook page. The Hudson rink is owned and maintained by Cumberland/Oxford Community League.



Come join the conversation!

Join our Cumberland-Oxford Community League Group (This is a closed group for residents of neighbourhoods of Cumberland, Oxford, Carlton, Hudson, Skyview, North Oaks and Albany) where you can post and share information with your neighbours

www.facebook.com/groups/coclneighbourhood/

Get your COCL membership today on Communibee App.



Knights Pub & Grill

Daily Food & Drink Special • VLTs • OFF SALE

- GOOD FOOD • ATM • FREE UFC ON BIG SCREEN • FREE NFL • 4* TORNADO FOOSBALL TABLE •
- FREE POOL ALL DAY SUNDAY • 10 TABLET FOR BUZZ TIME TRIVIA & POKER •

**2 Medium 2 Topping
Pizza
+ 10 Wings**

\$24⁹⁵
+GTS

**2 Large 3 Topping
Pizza
+ 12 Wings**

\$35⁹⁵
+GTS

**2 Lasagna + 2 Garlic
Toast**

\$20⁹⁵
+GTS

**10% off with this AD.
Not for food special
only for regular menu.**

11860 145TH AVE EDMONTON, ALBERTA, T5X 2E3 780-472-8505 (NEXT DOOR TO 7-ELEVEN)



Dunluce Community League News

DUNLUCE EXECUTIVE

PRESIDENT	Keoma McMurren	780-457-9101
VICE PRESIDENT	Mark Gross	780-456-5700
TREASURER	Loretta Wonitoy	780-457-9101
SECRETARY	Lorna Melnyk	780-456-4596
PAST PRESIDENT	Nadine Meads	780-982-6260
CDRS REP	Ryan Korpesio Carla Korpesio	780-444-9212 780-444-9212
VARIETY SHOW	Denyse Ward Sabrina Jackson	587-983-9401 780-232-1925
CASINO	Maureen Ewart Mark Gross	780-457-0708 780-456-5700
MEMBERSHIP	Christina Fletcher	780-484-3051
PUBLICITY	Bev Gross	780-456-5700
SOCIAL	Lorna Melnyk	780-456-4596
BINGO DIRECTOR	Amanda Wentzell	780-977-7923
SOCCER	Dana Trendall	780-504-0701
SOFTBALL	Loretta Wonitoy	780-457-9101
PROGRAMS	Registrar	780-914-1775
WAYS & MEANS	Lisa Love	
SOCCER EQUIP.	Arlene Pettifer	780-456-3978
BUILDING & ASSETS	Al Chapman	780-456-9292
PLAYSCHOOL	Registrar	780-499-0232
COMMUNITY SERVICES	Rochelle Diederichs	
HALL RENTALS	Al Chapman	780-457-4342

**P.O. Box 36050 Castledowns RPO/Edmonton AB T5X 5V9/Dunluce
Hall: 11620-162 Ave./780-456-3978/www.dunlucecl.ca**

DUNLUCE COMMUNITY LEAGUE 2020 HALL RENTAL RATES

For information call:

(780) 457-4342 or e-mail:

hallrental@dunlucecl.ca

HALL IS NEWLY RENOVATED

*** SEATING CAPACITY 120 ***

WEEKEND RATES:

Dunluce Community League Members:

6:00 PM Friday evening until 5:00 PM Sunday evening,
\$350.00 plus \$500.00 damage deposit.

Non – Dunluce Community League Members:

6:00 PM Friday evening until 5:00 PM Sunday evening,
\$450.00 plus \$500.00 damage deposit.

DAILY RATES (WEEKENDS ONLY)

Saturday 9:00 AM until Sunday 9:00 AM (24 Hr. Rental)
\$500.00 damage deposit

Dunluce Community League Members: \$250.00

Non – Dunluce Community League Members: \$350.00

Hourly Rate: \$50.00 per hour. (3 hour minimum) Hourly rate is only available Monday to Thursday. Damage Deposit equal to rental cost.

In order to obtain the Member rate, you will be required to have held a valid Dunluce Community League membership for at least 1 year prior to your booking.

Upcoming Bingos

If you have an upcoming Bingo please see dates below. You will also be receiving a call as a reminder. If you have any questions or you have not received a registration bingo date, call:

Amanda: 780-977-7923

Dates are as follows:

December 8th 2020, January 4th 2021

All Bingos are at Kensington Bingo Hall unless otherwise stated.

FOLLOW US! LIKE US!

Never miss another community event or announcement by liking our "Dunluce Community League" Facebook page and following us on twitter (@dcljeg)



DUNLUCE PRESCHOOL FALL 2020/SPRING 2021

The Dunluce Preschool Executive Team has decided that they will not be offering preschool for 2020/2021 school year due to Covid 19. Considering the amount of time, energy and commitment to ensure our teachers and little preschoolers are in a safe environment, we feel it is not in the best interest of everyone involved, including the parent helpers, at this time.

We will be watching and listening to what may or may not occur in 2021 and re-evaluate for a potential start in September 2021.

Thank you for your patience as we navigate our new environment. If you have any questions, please don't hesitate in contacting us directly.

Sincerely,

Dunluce Preschool Executive Team



Castledowns Dental

General Dentistry

Dr. Matthew G. Ploboda D.D.S.

Family Dentistry Just Minutes Away

**New Patients Always Welcome
Direct Billing • Invisalign
Cerec • Nitrous Oxide
Dental Implants**



#202, 15961 - 97th Street NW

780-456-4441



Lorelei-Beaumaris Community League News

LORELEI BEAUMARIS HALL RENTALS 16220 – 103rd Street

Lorelei-Beaumaris Community League has the largest Hall facility in Castle Downs.

- Hall dimensions are approximately 60 ft x 52 ft (bar to wall)

- Accommodation for 448 guests (non-fixed seats), 354 (non-fixed tables & seats), 280 (dining and beverage).

- Air conditioned, pot lighting, coatroom, wheelchair accessible washrooms

- Raised stage setting (stage dimensions 13 ft x 20 ft wide)

- Stage risers for the floor area (Risers consist of 5 units (ea 4' x 8') for a total raised floor stage setting of 20' x 8', grey carpeted & black skirting - \$100 with main hall rental)

- Black Lectern (podium)

- 30 - 5ft round tables, 40 - 6ft rectangular tables 2 - 3ft accent tables

- Full, commercial kitchen with natural gas stove & ovens

- Spacious wet-bar area with bar-fridge and ice machine

- Large BBQ available (cooks up to 65 burgers or 126 hotdogs all at once)

- Multimedia system available for powerpoint, slideshows, videos, etc...

- We do not have linens or chair covers. Event rental companies will be able to assist you with these items.

NEW HALL RENTAL RATES:

- \$1000 – full weekend: Friday, Saturday, Sunday

(Note: Sept - May full weekend bookings must be made at least 8 weeks in advance)

- \$400 - Friday

- \$600 - Saturday

- \$350 - Sunday

- \$50 - extended hourly rate / week day hourly rate

- Sound System INCLUDED into all rentals



- \$35 – music (if recorded music of any sort is played - Socan & Resound tariff)

- \$100 - 20'x8' floor level stage risers (carpeted and skirted)

- \$100 – Large BBQ (cooks up to 65 burgers or 126 hot dogs at once)

- \$50 – dishes rental (plates, cutlery, glassware, limited small wares)

- Deposits: for single day or hourly rentals - \$500; for full weekend rental - \$750

All Rates include GST

- * Please note that all contracts signed for hall rentals will be required to purchase Renters Insurance for their event date at Lorelei Hall. We will give them the link to FPB Insurance to do this online. *

- * Discounts may be available to LBCL Members who are booking for their use. Please talk to the hall manager for more information.

Feel free to call Maria 780-686-4415 for questions regarding hall rentals or to make an appointment to view the hall. Leave a detailed message or email hallrentals@lbcl.ca for more information.

For more photos of our hall please visit our website at www.lbcl.ca or our Facebook page at <https://www.facebook.com/loreleibeumaris>

Edmonton

Beaumaris Lake Open Space Renewal

Beaumaris Lake Open Space Renewal

The City of Edmonton - Open Space Infrastructure Delivery is coordinating construction for the rehabilitation of the open space around Beaumaris Lake.

SCOPE OF WORK

Construction is currently underway..

Construction is ongoing at the west and east parks, viewpoints and areas along the trails where new light poles are being installed. The trails will continue to be accessible for users but may also be used for access to work areas. When there is active construction work, sections of the trail may be temporarily closed to the public in which case detours will be provided with signs installed to guide pedestrians.

Construction will continue until January 2021 before breaking for winter. Work will resume in early spring, depending on the weather.

During the winter break, the trails around the lake will be open and snow clearing will be maintained. This includes the new trail from the Edmonton Public Library - Castle Downs to the Promenade in the west park. The trail along the north loop where concrete was removed will remain as a gravel trail for the winter ahead of asphalt paving in early spring. The view points will also be open for public use.

Attached is a [Fence Plan](#) showing where fences (marked as red lines) will be placed over the construction winter break. Some areas will remain fenced off throughout the winter break as they are unfinished and are not safe for public use. Updates will also be available at the project webpage: edmonton.ca/BeaumarisLakeRehabilitation

ACCESS

During construction, access in and around the lake will be maintained. In areas where there will be active construction work, temporary access routes will be identified and marked. **If you have special access requirements, please contact beaumarislakerehabilitation@edmonton.ca to coordinate access.**

Construction Impacts

The work may create noise and vibrations which will have a short-term impact on adjacent residents. All City of Edmonton contract workers are required to abide by the City's Community Standards Bylaw 14600 which restricts noise levels and hours of work.

https://www.edmonton.ca/projects_plans/parks_recreation/beaumaris-lake-open-space-rehabilitation.aspx • beaumarislakerehabilitation@edmonton.ca

Seek help for the Baby Blues

Becoming a parent can be a difficult transition, for both partners.

About 50 to 80 per cent of women have postpartum blues or "baby blues" the first two weeks after a baby is born. Keep in mind that your body has just gone through a large amount of stress. Hormones are regulating, and you are transitioning into parenthood.

After the first couple of weeks, many women feel symptoms of depression and heightened levels of anxiety and worry. The most common scenarios include worrying about something happening to the baby, her partner, or herself.

Her partner may also experience symptoms of postpartum mood disorder. In fact, studies suggest that if a woman is experiencing symptoms of depression or anxiety, her partner is 50 per cent more likely to have their own symptoms.

One in 10 men will experience symptoms of postpartum blues -- most commonly depression and/or anxiety.

Men, however, often don't experience these

symptoms until four to six months after the baby's birth. Signs include:

Being quick to anger

Working longer hours

Avoiding activities/hobbies that they were once interested in

Having a new baby adds extra stress to the relationship. Many describe a decrease in marital or relationship satisfaction during the first year after a baby is born. With that in mind, it is important to:

Communicate needs to one another

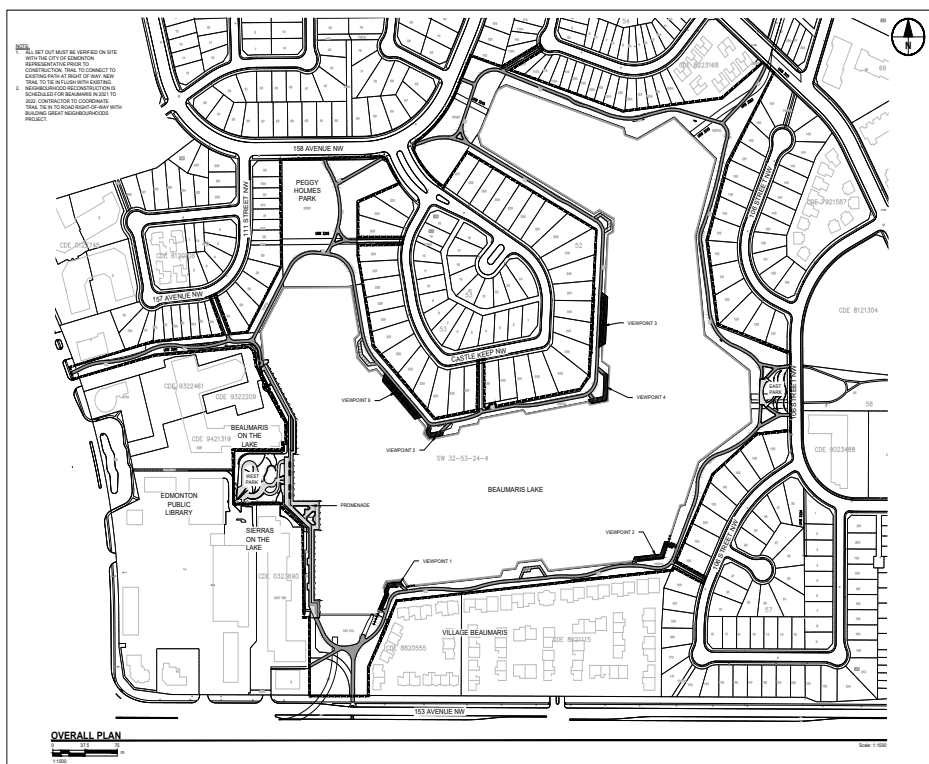
Engage in self-care

Find time to participate in activities of interest together, and separately

Access professional support when necessary

Find ways to connect with other new parents, family, and friends

If you are struggling to manage your mental health after the birth of your new baby, call 811 or the Mental Health Helpline at 1-877-303-2642 or your local Addiction & Mental Health office for support. Help is available.



LIGHT MIDWAY

ILLUMINATE HISTORY



Fort Edmonton Foundation is raising funds to support the expansion of Fort Edmonton Park's historical midway!

GREAT GIFT!

Buy a bulb for yourself or a loved one

Donate a bulb in memory of someone special

Gift a bulb to celebrate an occasion

\$50 each. Charitable tax receipt and commemorative certificate with the name of your choice will be mailed.



Donate Online: www.lightthemidway.ca

Etransfer: admin@fortedmontonfoundation.org

Credit Card by Phone: (780) 496-6977

Mail Cheque: Fort Edmonton Foundation
PO Box 67112 Meadowlark RPO
Edmonton T5R 5Y3

Charitable registration # 10739 4058 RR0001



Preschool & Kindergarten

Spots Available

We're following all necessary guidelines set by AHS in regards to COVID and children in school. Our staff are working hard to keep all children safe.

A comprehensive early education program for 3 to 5-year olds.

- Small Class Sizes • Professionally Qualified Teacher (B.Ed.)
- Trained Teaching Assistants • A Fun, Friendly, Safe Environment

13931 – 140 St, NW Edmonton 780.473.7216

Edmonton Catholic Schools
Trustee Sandra Palazzo Ward 72

Wishes you and your Family a

MERRY
CHRISTMAS
&
HAPPY NEW YEAR

You can reach me at 780-965-6083 or
Sandra.Palazzo@ecsd.net
You can also connect with me on Facebook & Twitter



EVERYONE WELCOME

Sundays
10:30 am

Lago Lindo
Community League

For more information check out
www.summitlifechurch.ca
or contact at
summitlifechurchyeg@gmail.com