

NORTHEAST VOICE

Proudly serving the community leagues of
Evansdale, Kilkenny, and McLeod

December 2022



Published by Calder Publications. To advertise please call 780-434-9732 or email info@communityleagueneews.com

McLeod Rink



The rink will be up and running by time this newsletter is in your mailbox, barring any unusual weather.

We anticipate running with no COVID restrictions this year. We would still ask you to be respectful of others. Please don't come to the rink when you might be contagious.

We should be able to run both rinks as well as the change room and concessions.

Our opening hours are:
Mon. to Thur. 4pm-9pm.

Saturday and Sunday
Noon-5pm.

The rink closes in case of inclement weather. This might include:

Weather colder than minus 20.

Weather warm enough to melt the ice. This is hard to predict, as a cloudy day at +5 is likely okay, but a sunny day at -1 can melt the ice very quickly.

Fresh snowfall. It takes several hours to remove a layer of fresh snow from the ice surfaces.

Rink closures are normally posted on the McLeod Facebook page. Please watch there for unscheduled rink closures.

As in previous years, the larger east rink will be used for hockey and the smaller west rink (closer to the rink

shack) for family skating. No sticks or pucks are permitted on the west rink. Skaters under the age of 18 must wear a helmet on either rink.

We have a very good supply of helmets and skates for loan. Just ask Monty, our rink attendant, and he will be able to help you out. There is no cost for this.

For those with a membership in any Community League, skating is free. For those with no membership, the cost is \$2 to skate.

Questions about the rink should be directed to facility@mcleodcl.ca

Evansdale Community League Swim

City of Edmonton Leisure Centre	Day of the week	Swim Times
Grand Trunk Fitness and Leisure Centre 13025 112 Street	Friday	7:00-9:00pm
	Sunday	4:15pm-5:45pm
Londonderry Leisure Centre 14528 66 Street	**Shut down until December 16**	
O'Leary Leisure Centre 8804 132 Avenue	Saturday	3:45-5:45pm

Show your valid 2022-2023 Evansdale Community League membership card at any of the following City of Edmonton Leisure Centres and enjoy FREE swimming during the times listed.
www.communityleagueneews.com

Kilkenny Events Coming Up

New year day
Free skate and hot chocolate 11:00-2:00

Weather providing
Yoga are you interested in.
let Anna know 780-478-3269
Looking at starting up hopefully in January.



STAY AND PLAY

PARENT AND CHILD DROP-IN GROUP

Every Monday
10:00 am - 12:00 am

and Thursday
10:00 am - 1:00 pm

McLeod Community Hall
14715 59 Street



FREE drop-in parent and child play group.

Snacks are provided.

All are welcome; play spaces are designed for ages birth to 6 years old.



Norwood
Child and Family Resource Centre

For more information call:
780-471-3737

Swim Times

Londonderry Pool Sun 4:15 to 5:45
Grand Truck Pool Friday 7pm to 9 pm
O'Leary Pool Saturday 3:45 to 5:45

Evansdale Rink and Skating Oval

Our skating rink and oval are almost ready for the season! With the consistent cooler temperatures and pending snowfalls we anticipate our surfaces will be ready at the beginning of December. Visit our Facebook page for more updates on the progress!

Evansdale Community League News

Serving: Evansdale — Belle Rive — Eaux Claires



City forecasts an improved snow and ice experience for this winter

The winter forecast calls for an improved experience when it comes to Edmonton's Snow and Ice Control, helping ensure safe mobility no matter how Edmontonians choose to travel across the city. Edmontonians will also have the opportunity to sign up for a new parking ban notification tool that now includes text notifications and advanced notification of clearing in specific areas.

"This year, we want to ensure that everyone who lives, works and plays in Edmonton has an improved winter experience," said Craig McKeown, Branch Manager, Parks and Roads Service. "Additional funding provided by Council will help enable the City's operations to be more effective in responding to winter weather conditions, providing more consistency in what Edmontonians can expect."

"When it snows, we are out working. Edmontonians will see an improved experience in road and pathway clearing when the snow starts to fall in 2022," said Valerie Dacyk, General Supervisor, Infrastructure Field Operations. "More crews will be seen clearing roads, pathways and City walkways. Edmonton is a winter city and we know

that every day, people travel across our city in a variety of ways."

2022/23 Improvements

Edmontonians can expect to see the following improvements in snow and ice operations, this year:

Improved experience - Earlier this year, City Council provided additional funding for Snow and Ice Control that will help enable operations to be more effective in responding to winter weather conditions, which will provide more consistency in service. More equipment on the road and larger areas covered more quickly. Additional pick up of collected snow around school zones. More frequent residential maintenance which includes the grooming of snowpack.

The addition of three supplier-filled large sandbox sites for public access. This season, the City will not be doing bare pavement plowing in residential areas, which will reduce windrows and catch basin issues in spring.

As part of the in-season enhancements for this year, Edmontonians can expect to see ticketing and towing as a tool to contribute to the speed, efficiency and qual-

ity of snow and ice clearing throughout the city. It should be noted that the current by-law ticket is \$100, however, amendments to the traffic bylaw are on the agenda to be discussed at an upcoming Council meeting, which may result in an increase of this fine up to \$250.

"Snow removal is a shared responsibility and when vehicles are parked in areas that crews come to clear, it means a reduction in the effectiveness of the snow removal," said Dacyk.

Improved Parking Ban Notification Tool

Starting today, Edmontonians are invited to sign up for a new parking ban notification tool that allows them to get improved notifications about snow clearing in areas that affect them during a parking ban.

Residents will be able to choose to receive a text and/or email notification, and receive that notification up to 24 hours in advance of crews clearing their area. Once the crews have completed the area, a second notification will be sent to the resident letting them know. This new tool helps increase the convenience of moving vehicles off the streets and the effi-

ciency of snow clearing.

People receiving notifications in previous years will have to create a new account and indicate their preferences for communication. Residents can sign up by visiting edmonton.ca/SafeTravels. Priority Clearing and Parking Ban

When it snows, there's a priority clearing system designed to keep Edmontonians safe and traffic flowing smoothly. Roadways and Active Pathways have their own teams and specialized equipment to complete clearing. That way, the service that

they deliver does not compete with each other.

The City has the option to call a two-phased parking ban, allowing for improved service when conditions require it. The citywide parking ban consists of the following:

Phase 1 - Major Roads: Crews clear arterial and collector roads, bus routes and business improvement areas.

You may continue to park on your residential street. **Phase 2 - Residential and Industrial Roads:** Crews clear residential and industrial roads. You may park in

your driveway, in a parking space on a neighbour's property with their permission, or on any road cleared during Phase 1 where parking is allowed normally.

Name a Plow Contest

This year, we are excited to invite all Edmontonians to participate in the Name a Plow contest! Everyone is invited to submit their most creative ideas by visiting edmonton.ca/SafeTravels. Five plows will be named and have those names displayed on them for the season. For more information: edmonton.ca/safetravels

Evansdale Community League General Meetings

Do you have any questions or concerns relating to our community, have fresh ideas on what you would like to see happen in our community or looking to get involved in by becoming part of our Community League

Executive Team? Meetings take place at 7:00PM on the second Tuesday of each month at the Evansdale Community League Rink Shack and are open for anyone to attend.

Hall Rentals at Evansdale Community League

Looking for a venue for your next event? Our hall can accommodate 180 people indoors, has a private outdoor patio, full kitchen and a bar with two freezers.

For more information including how to book and our updated pricing please contact Teri Muiselaar by phone; (780) 478-4444 or (780) 222-0474 or by email;

Community League Memberships

Get your membership anytime! Membership makes you part of an amazing community of people who care about and help look after our community. Get free community swims, discounts on community programs, discounts

on Edmonton City wellness programs, hall rentals and enjoy skating in the winter! \$25 Family, \$10 Single, \$10 Seniors, \$15 Single Parent, \$15 Couple with no children. Contact Elaine Sarac at to get your Community League Membership.

Denture Specialist - Over 35 Years Experience

Londonderry Denture Clinic



FREE CONSULTATION

M. Lucyshyn DD

R. Lucyshyn DD

780-476-2529

- New dentures in one day
- Repairs in 30 minutes
- Emergency after hours appointments

**SENIORS
Ask how you
may receive your
dentures
AT NO COST
TO YOU***

*Some conditions and restrictions apply.

www.londonderrydentureclinic.com 13594 Fort Rd. Northeast Edmonton



Heather Sweet

MLA for Edmonton-Manning

14932 - 50 Street
Edmonton AB, T5A 5H7
780-414-0714

Edmonton.Manning@assembly.ab.ca

@sweetmla
@heathersweetab
@heathersweetab



Merry Christmas

McLeod Community League News

McLeod Community Safety Director

Alberta Traffic Safety Calendar Focus- Impaired Driving

As of December 18, 2018 new federal legislation for mandatory alcohol screening authorizes law enforcement officers to request a breath test for blood alcohol concentration from any driver they lawfully stop.

If you are found guilty of driving over the criminal limits for alcohol or drugs, you will face serious criminal penalties in addition to any provincial sanctions that apply.

Alcohol

Federal limits

In all Canadian provinces, the maximum legal blood alcohol concentration (BAC) for fully licensed drivers is 80 milligrams of alcohol in 100 millilitres of blood. Driving with BAC of 0.08 or more is a criminal (federal) offence and the penalties are severe.

Provincial limits

In Alberta, and in most other Canadian jurisdictions, if your BAC is between 0.05 and 0.079, you will also face provincial consequences through the Immediate Roadside Suspension Program.

Drugs

If police determine you are driving while impaired by any drug, including illegal drugs, cannabis, prescription and over-the-counter medications, you will face severe consequences, including federal criminal charges and penalties and provincial sanctions.

Commercial Vehicle Drivers

The Immediate Roadside Sanctions (IRS) Program of IRS ZERO: Commercial aligns with Alberta Transportation's mandate to improve road safety for all users. Commercial drivers, operating in a commercial capacity, are held at a higher standard due to the complexity and size of commercial vehicles. Commercial industry stakeholders supported a zero tolerance approach for commercial drivers. This change also aligns with other Canadian jurisdictions who currently have a zero tolerance approach for commercial drivers who operate in a commercial capacity.

The IRS ZERO: Commercial Program is administered under section 88.02 of the Traffic Safety Act and applies to drivers when law enforcement has reasonable grounds to believe that a commercial driver has operated a commercial vehicle in a commercial capacity with any alcohol or drug in their body.

The IRS ZERO: Commercial Program applies to any driver who is operating a:

Commercial vehicle, or combination of commercial vehicles, that has a registered gross vehicle weight of more than 11,794 kg.

Commercial vehicle that has a manufacturer's seating capacity originally designed for 11 or more passengers, including the driver

Commercial drivers must have a zero (0.00) blood alcohol concentration or blood drug concentration when driving a commercial vehicle.

Substances

The IRS ZERO: Commercial Program applies to all alcohol and drugs.

Under the IRS ZERO: Commercial Program, there is a zero tolerance approach for any alcohol or drugs, or both, for commercial drivers operating a commercial vehicle in a commercial capacity.

Immediate roadside appeal

You can request a second breath test on a different instrument to confirm your blood alcohol concentration or a blood test for drugs to confirm your blood drug concentration.

If the results of your second test is less than any prohibited drug or alcohol concentration, your Notice of Administrative Penalty in the IRS ZERO: Commercial Program will be cancelled by law enforcement.

If the results of your second test is equal to or greater than any prohibited drug or alcohol concentration, your Notice of Administrative Penalty in the IRS ZERO: Commercial Program will be confirmed by law enforcement.

Sanctions

Once the Notice of Administrative Penalty is issued by law enforcement, the driver's Licence suspension or disqualification begins immediately. A Confirmation of Suspension will be sent to the last known address listed on your motor vehicle file. If you reside outside of Alberta, your home jurisdiction will be notified of the suspension or disqualification. Repeat alcohol driving occurrences show a pattern of high-risk driving behaviour and therefore the penalties escalate with each prior occurrence. [continues on pg 4](#)

www.communityleagueneews.com

The Mystery of the Tomato Plant Vanishing



Sadly we had an incident where a member of our Free Stuff group gave away specific clothing items and then had her tomato plants taken as well. This was a mystery that even Sherlock Holmes was impressed with. When the giver asked the receiver about it, the receiver said they accidentally took the tomato plants and would bring them back right away.

The next day the plants were still not returned. When asked by the giver, the receiver said the tomato plants were accidentally tipped over. When the giver still asked for them back, the receiver ghosted faster than the ghosts in Super Mario Bros. I banned the receiving member as that is not good behaviour. I am guessing the tomato plants tipped over right into her garden.

The story continues...

As the sun casts its rays to the city below, the tomato plants replaced by the kind members looked into the blue sky. Their roots spreading out into the healthy soil filed with life. Bright red and yellow tomatoes would soon be on the horizon in this garden of tranquility.

Elsewhere, the tomato plants of ill gotten gain struggled to survive in the clay soil of a hastily made garden. The ramshackle fence bordering the back of the garden flaked its lead paint into the clayish soil in which the plants absorbed. As quickly as the plants were taken and then knocked over into the makeshift gar-

den, was as equally as quick as they started to wither. Rain poured down mixing the clayish soil with the flakes of lead paint dissolving them into a toxic brew readily absorbed by the stolen tomato plants. In time only one plant would survive, twisted and knarled bearing a few tomatoes oddly coloured a sickly pale red.

As the withered lone tomato plant grew as did the corruption in the thief's soul. The sickly green vines fed on lead paint and brackish clay soil. Where the other stolen tomato plants soon died, this lone plant continued to grow like a festering tumor. The wood fence bordering the back of the garden continued to flake its poison and the clouds continued to pour down.

As the thief sat at her kitchen table, she pondered how certain life choices would have taken her on brighter path. She chuckled to herself, "I'll never return those plants. They're mine now." The rain tapped lightly against the dingy window as she took another drag of her cigarette. The smoke filled the kitchen and sifted to other parts of the house and then out the screen door like many hopes and dreams long dead in the recesses of the past.

Outside the lone tomato plant had one tomato upon it. Filled with the regret, hate, and despair mimicking the thief's life it grew into a sickly red bulbs thing ready to be eaten. And the rain fell again on the garden of the damned.

McLeod Indoor Soccer Update

CGSA will be taking a break from December 19 to January 5 for Christmas and U17's will kick off the new year on January 6. The indoor season is tentatively scheduled to conclude at the end of February.

For those who registered for other sports and programs for the winter, we look forward

to seeing you in February when we start taking registrations for the 2023 outdoor season.

Please do not hesitate to email soccer@mcleodcommunityleague.ca if you have any questions.

Todd

McLeod Soccer Director

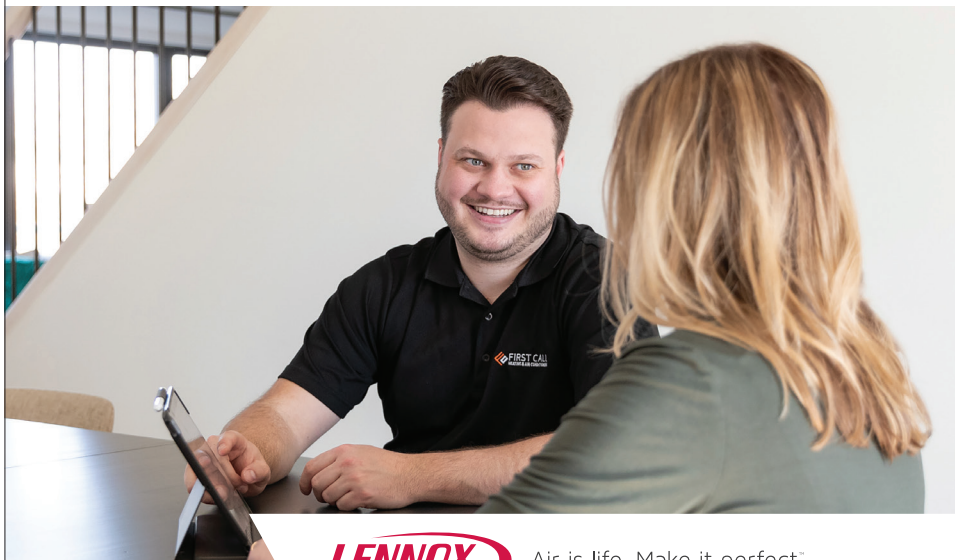
McLeod AGM

After some delay, McLeod will hold its AGM on Thursday, January 26th at 6pm at McLeod Hall. Stick around after for a small bite to eat. Come out and check in on your Community League or volunteer for a position.



Get Comfortable With Big Savings!

Bundle and Save On A New Lennox Furnace and Air Conditioning System



LENNOX Air is life. Make it perfect.™

**Receive up to \$1,200 in rebates
on the Lennox Ultimate
Comfort System**

**AND Make No Payments
Until 2023!**



firstcallheating.ca | 780.464.3337

If you are issued a Notice of Administrative Penalty under the IRS ZERO: Commercial Program, you will receive the following sanctions:

First occurrence in a 10-year period

You will receive:

an immediate 3-day driver's Licence suspension where you are unable to drive under any circumstances

a \$300 fine plus victim of crime surcharge of 20 %

Second occurrence in a 10-year period

You will receive:

an immediate 15-day driver's Licence suspension where you are unable to drive under any circumstances

a \$600 fine plus victim of crime surcharge of 20 %

Third and subsequent occurrence in a 10-year period

You will receive:

an immediate 30-day driver's Licence suspension where you are unable to drive under any circumstances

a \$1,200 fine plus victim of crime surcharge of 20 %

Class 5 GDL/Class 7 Learner's Licence

The Immediate Roadside Sanctions (IRS) Program of IRS ZERO: Novice is administered under section 88.01 of the Traffic Safety Act. It applies to drivers when law enforcement has reasonable grounds to believe a driver operated a motor vehicle with any amount of alcohol or drugs in their body while they were a novice driver with a Class 7 Learner's Licence or a Class 5 GDL Licence. These drivers must have a zero (0.00) blood alcohol concentration or blood drug concentration when driving.

Substances

The IRS ZERO: Novice Program applies to all alcohol and drugs. Under the IRS ZERO: Novice Program, there is a zero tolerance approach for any alcohol and drugs for novice drivers in the Class 7 Learner's Licence or a Class 5 GDL Licence category.

Immediate roadside appeal

You can request a second breath test on a different instrument to confirm your blood alcohol concentration or a blood test for drugs to confirm your blood drug concentration.

If the results of your second test is less than any prohibited drug or alcohol concentration, your Notice of Administrative Penalty in the IRS ZERO: Novice Program will be cancelled by law enforcement.

If the results of your second test is equal to or greater than any prohibited drug or alcohol concentration, your Notice of Administrative Penalty in the IRS ZERO: Novice Program will be confirmed by law enforcement.

Sanctions

Once the Notice of Administrative Penalty is issued by law enforcement, the driver's licence suspension or disqualification begins immediately.

A Confirmation of Suspension will be sent to the last known address listed on your motor vehicle file.

If you reside outside of Alberta, your home jurisdiction will be notified of the suspension or disqualification.

If your driver's Licence has been suspended under the IRS ZERO: Novice Program, you will receive the following sanctions:

an immediate 30-day driver's Licence suspension where you are unable to drive under any circumstances

a 7-day vehicle seizure

a \$200 fine plus victim of crime surcharge of 20%

24 Hours Suspension

Drivers who are suspected of being impaired by alcohol, drugs or a physical or medical condition that affects their ability to safely operate a vehicle are subject to a 24-hour driver's Licence suspension.

Drivers who receive a 24-hour driver's Licence suspension for medical reasons may have their file reviewed by Alberta Transportation's Driver Fitness and Monitoring staff to determine their fitness to drive.

Parking Bans

Parking Bans can be declared between November 5 and March 15 with 8 hours notice to conduct snow plowing or removal. Bans remain in effect until the City declares it is over. Please don't park on a plowed bus route until the ban has been officially lifted. Failure to comply with the Parking Ban may result in a Fine of \$100 plus the cost of Tow.

Snow on Sidewalks

Please maintain your sidewalk adjacent to your property. It is your responsibility and failure to do so can result in a Fine of \$100.00 plus the cost of the City hiring a Contractor to remedy the situation which then gets put on the homeowners tax roll. I encourage you as neighbours to help out your fellow neighbours who may struggle or cannot shovel or remove ice from their sidewalks due to injury or disability. Unfortunately the City of Edmonton does not have a Snow Angels Programs. If you choose to report snow covered or icy sidewalks that are the responsibility of an homeowner, business owner or the City you can call 311.

Putting Snow on Roadway

Snow cannot be put on the roadway from the sidewalk or your driveways. This action violates Edmonton Bylaws and could result in a fine of \$250. Putting snow on the road contributes to unsafe driving and walking conditions, increases the cost of providing winter road maintenance and can lead to blocked storm drains. If you do not have room for snow on your property, you can haul it to one of 4 snow dumps in Edmonton free of charge. Phone 311 or go to City of Edmonton website to get locations. [continues on pg 5](#)

www.communityleagueneews.com



Parking on/across Sidewalks

Please do not park on or across a sidewalk. You could be fined up to \$100.00.

I encourage you as neighbours if you have an issue and you feel comfortable talking to your neighbour to speak to them directly about it. If you don't feel comfortable you can call 311 or download the 311 APP and make a complaint.

Pets and Cold Weather

The Cold temperatures are here and in Alberta that can be dangerous for your pet. The best place for your pet is inside except when you take it outside to walk it or get exercise or if the breed of the dog is capable of surviving outdoor cold weather. In saying that there are requirements under the Alberta Animal Protection Act you need to follow to help keep your pet safe

Shelter: Your dog needs to have a proper dog house. Dog house needs to have proper bedding such as straw or blankets. Straw is recommended over blankets which can soak up moisture and then turn to ice. The dog house should have a door to stop any wind. L-shaped entrances work well to reduce wind chill.

Water: Your Dog must have access to water at all times. Frozen water or snow does not count. Consider getting a heated bowl to avoid freeze up. Avoid using metal bowls that dogs tongues can stick and freeze to.

Food: Your dog must be fed food everyday. When the temperatures get cold ensure you add extra food to assist in the necessary energy to keep your dog warm.

If your dog is an indoor dog ensure when you let them outside that you let them in right away during frigid temperatures once they are done going to the bathroom. Do not leave dogs in cold vehicles.

If you believe a dog or cat is in distress

please report it to 311 and if 311 is closed please report to Edmonton Police at 780-423-4567. Dogs or Cats in distress can be one or all of the above issues. Signs of distress can be shivering excessively, lifting its paws, licking or biting its paws, whimpering, howling or excessively barking (dogs) and or not moving.

Animal Owners can be charged under Alberta Animal Protection Act with fines up to \$20,000 and could be banned from owning animals. In addition if owner of an animal causes the distress they could be charged Criminally and could face jail time.

Consider using dog friendly ice salt on your sidewalks even if you don't have a dog to be a good neighbour. Regular ice salt can irritate dogs pads on their feet.

Crime Prevention

When you leave or go to bed ensure all your doors and windows are locked. Ensure your vehicle doors are locked. If you have a security system ensure it is armed. After Christmas is over avoid placing high-ticket boxes or store bags out on the curb that are visible to everyone. Take larger boxes to the recycle depot and place store bags and wrapping paper in black garbage bags before putting in blue or clear recycle bags.

Do not place presents under a Christmas Tree that can be easily viewed from the outside of your home

Be cautious with candles. Do not leave them unattended.

This is the season of giving and if your able to support your favourite charity or can donate to any of them which includes the Christmas Bureau, Santa's Anonymous, The Food Bank, Mustard Seed or The Hope Mission to name a few please consider doing so if you can. If you have already I thank you .

Hope everyone has a Merry Christmas and a Happy New Year!!! Be safe!!!

At EPL Londonderry

Weekly:

Settlement Practitioner (Adult)

***Check in with the LON branch for ongoing schedule updates.

We offer Settlement Services to help you with common questions about moving to Canada and settling into a new home.

Sing Sign Laugh and Learn (Baby & Toddler)

Mondays 10:15 AM – 11:00 AM, 2:15 PM – 3:00 PM

Tuesdays 10:15 AM – 11:00 AM

Wednesdays 10:15 AM – 11:00 AM

Saturdays 2:30 PM – 3:15 PM

You and your child from birth to age three are invited to join us for songs, rhymes and signs.

STEAM Lab (Ages 9-12)

Tuesdays 4:00 PM – 5:00 PM

From robot battles to hovercrafts to building your own games, discover all things Science, Technology, Engineering, Art and Math.

LACE Conversation Circle (Adult)

Thursdays 10:00 AM – 12:00 PM

Drop in and join others who also want to practice their English.

Teen Lounge (Teen)

Thursdays 6:00 PM – 7:00 PM

Join other teens in the program room to play video games, make a DIY project, meet friends or just hang out.

Tech Time (All/Adult/Senior)

Fridays 3:00 PM – 4:00 PM

Need some one-on-one tech help? Bring your device (or use one of ours) and come prepared with a tech-related question or challenge you would like to explore with a savvy

staff member.

Youth Talk (Teen)

Fridays 3:30 PM – 5:00 PM

Practice your communication skills and gain familiarity with Canadian society and culture in this conversation-based program designed for newcomer youth.

Preschool Problem Solvers (Ages 4-5)

Thursdays 4:00 PM – 5:00 PM

Preschool Problem Solvers introduces shapes, numbers, colours and classroom behaviour to children aged four to five.

Monthly Events:

Book Clubs of EPL

No book club in December.

Book club will resume monthly in the new year on the 4th Wednesday of the month from 7-8 PM.

Visit our website for updates.

At EPL McConachie

Weekly:

Sing Sign Laugh and Learn (Baby & Toddler)

Mondays & Fridays 2:30 PM – 3:15 PM

You and your child from birth to age three are invited to join us for songs, rhymes and signs

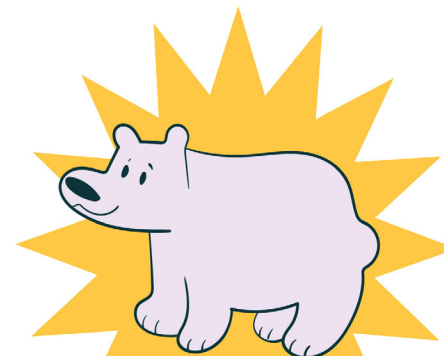
Baby Laptime (Baby & Toddler)

Wednesdays 10:30 AM – 11:00 AM

Enjoy delightful stories, songs, books, rhymes, finger plays and more, especially for babies.

Please note that all branches will be closed at 2 pm on Christmas Eve and will be CLOSED Dec 25th, 26th, and 27th.





**FIND POLAR BEAR
IN THE PICTURE**

**FIND
10
HIDDEN
OBJECTS
IN THE
PICTURE**

ANSWER ↓





U13 Team handball Registration - Now Open




Come try the exciting sport of team handball
BOYS & GIRLS TEAMS

5 playing dates
Games played in both Edmonton and Red Deer

FOR MORE INFO & REGISTRATION: www.albertateamhandball.com

With the onset of cold weather and people more congregating indoors, we are seeing an increase in respiratory infections such as Covid, Flu and RSV. Friendly reminder that if you or your child is unwell, please stay home. We've seen how quickly Covid can spread over the last two years, and we still need to take

extra precautions to prevent its spread and keep one another safe. While McLeod understands games can be competitive, we also advocate for good sportsmanship where players respect one another and congratulate each other at the conclusion of the game. We understand players sometimes get frustrated by what happens on the field, but we need to remain good sports, win or lose, regardless of the behaviour of the opposing team. We all hope spectators and players enjoy every game.

CGSA communities were also made aware of a situation where a spectator entered the field between games and confronted a referee. At no time shall spectators enter the field and confront

Flu Season, Sportsmanship and Facility Guidelines

referees. Spectators have no place questioning or challenging a referee. Spectators are there to watch and cheer. CGSA will do everything in its power to ensure referees feel safe.

When attending games, spectators should watch games from the stands, not in the hallway between the dressing rooms and field and should refrain from videoing games. Watching games from the hallway can be a distraction to those on the field. It also leads to congestion between games. As for video, we understand parents/grandparents want to video their child/grandchild. However, how can other parents be sure their children are not in the video? What happens if the pictures or video are posted to social media sites and another child in the picture is part of a custody case? From a parent's perspective, how do you know the person videoing a game is related to a player and not someone who has wandered into the facility for videoing players? From a McLeod perspective, we feel it's better to put the cameras and phones away and enjoy the game. We want to ensure everyone feels safe when attending games.

Todd, McLeod Soccer



Kilkenny News

Kilkenny Hall Rentals



Times	Auditorium	Meeting Room	Both
Weekdays / Weeknights	\$200	\$100	N/A
Fridays (after 5 pm)	\$400	\$100	\$500
Saturdays	\$550	\$100	\$650
Sundays	\$400	\$100	\$500
Two Day Wedding & Gift Opening (Sat – Sun)	\$750	\$100	\$850
Full Weekend (Fri @ 5pm – Sun @ 6pm)	N/A	N/A	\$1000
Hourly Rate (4 hour min.)	\$50	\$25	N/A

The Kilkenny Hall is available for rental!! It is the perfect space for your special event, meetings, weddings and any other social event. Please go to <http://www.kilkenny.ab.ca/facilities/view> to have a look and click on "Book Facility"

to...you guessed it... book the facility! Feel free to call 780-478-2481 to leave a message for bookings as well. Discounts available for those who hold a consecutive membership for a minimum two years with Kilkenny Community League.

We would like you to help Kilkenny



Looking to become a bigger part of our community? Needing to fulfill volunteer requirements? Have a passion you would like to share? Kilkenny Community League is looking for amazing community members join our team!

We currently have a vacancy for our Baseball/Softball Director. The position would come with training from our outgoing director. Questions, always feel free to ask any of our amazing team!

Are you that "techy" person? We aren't! Our website is looking for some TLC. If you love mixing tech with a touch of design, have we got a position for you! We would need some items updated periodically, which are provided

by our various directors.

Not looking for a specific position? Have some ideas you think we would love to hear? We also have Directors-at-Large positions open. This position gives you a chance to join the board, and see if you can find your place within it!

Our board meets the 2nd Tuesday of the month. If you're interested, but not sure, let us know and we can give you more detail. You can even come to a meeting to see if it is a good fit for you! We hope to see you soon!

Thank you to Everyone that attended our AGM

We are look out for Sport Director, Softball Director, Publicity Director and Any Board Member's at Large

We're here for you & your family.

Family Supports is a voluntary, early intervention program that provides support to families with children 7-18 years old to strengthen family functioning. Parents are supported to create a nurturing and safe family environment, build resiliency within themselves and their children, build new social connections, and learn about positive parenting and child development.

How can a worker help you and your family?

The Family Support program offers in-home support for families. All services offered as part of the Family Connect are completely free, including:

- Supportive counselling and goal setting
- Consultation and support to improve parent-child interactions
- In-home support
- Parent education
- Family interactive programming and activities
- Personal and family advocacy
- Information and referrals to additional resources

Family Supports by YMCA Family Connect

Castle Downs Family YMCA
11510 153 Avenue, Edmonton, AB T5X 6A3

780-377-3730

infohub@ymcanab.ca

ymcanab.ca/familyconnect



WEISS-JOHNSON
HEATING, AIR CONDITIONING & PLUMBING SERVICES

780-463-3096

OUR FAMILY HELPING YOUR FAMILY SINCE 1977.



**WITH ALL WE DO, THERE IS BOUND TO BE A
DEAL WAITING FOR YOU!**

**CHECK OUT OUR SPECIALS PAGE!
WEISS-JOHNSON.COM**

NOW HIRING – Apply Today!

WEISS-JOHNSON CAREERS

WJCAREERS.COM • CAREERS@WEISS-JOHNSON.COM

Merry Christmas and Happy New Year

Edmonton Catholic Schools
Trustee Sandra Palazzo Ward 72

Wishes you and your Family a

**MERRY
CHRISTMAS
&
HAPPY NEW YEAR**

You can reach me at 780-965-6083 or
Sandra.Palazzo@ecsd.net
You can also connect with me on Facebook & Twitter



Edmonton Catholic Schools Trustee Sandra Palazzo Ward 72

Edmonton Catholic Schools (ECSD) is committed to gathering valuable stakeholder input and hosted an engagement session on October 24th inviting our Community of School Councils (COSC) with an opportunity to share their feedback. We thank our School Councils and Principals for participating in this engagement session to assist the Board and Division in establishing priorities for the new Division Plan for Continuous Growth 2023-2026.

The Alberta School Boards Association (ASBA) held its Fall General Meeting in Edmonton on November 20-22. It was an opportunity for our Board to gather with members from school boards across the province to pass resolutions pertaining to education and to attend sessions that provided excellent professional growth opportunities. The program included an event where our Board was able to meet with our local MLAs to dialogue about issues and priorities facing Alberta's school boards.

There is also so much happening in regard to innovation which is essential to the continuing success of our Division. ECSD has a rich history and a proven track record in developing innovative ways to support the work of schools in creating new and exciting opportunities for students.

The Capstone Personalized Education Portfolio Program (C-PEPP) is one such opportunity available to ECSD students which creates an

alternate pathway for admission to Canadian universities. ECSD is one of three pilot school divisions in Canada. This pilot allows students to pursue a more personalized and authentic learning journey that enables them to have a well-rounded portfolio of experiences and gain them access to postsecondary opportunities at the University of Alberta.

The Centre for Global Education (CGE) also develops and delivers virtual collaborative learning projects that engage and empower K-12 students as global citizens. CGE is now housed within ECSD's central office, and in collaboration with our Learning Services Department, is providing support to schools across Alberta through a wide array of curricular and special interest topics and opportunities. We are so proud of the outstanding and innovative leadership being shown by staff within our Division.

We all have an important role to play in the success of our students and I wish to thank our staff, administration, parents and students for ensuring this year continues to be exciting and rewarding.

As we begin preparing for the Christmas season, I would like to take the opportunity to wish you all a Merry Christmas and Happy New Year! I look forward to the opportunity to engage with our school communities as I am committed to making decisions that are in the best interests of our students and ensuring the well-being of our Division is at the forefront of all that we do!

Paid by Sandra Palazzo

www.communityleagueneews.com

Blake Desjarlais

**Member of Parliament
Edmonton Griesbach**

Constituency Office
10212 - 127th Avenue NW,
Suite 102

📞 780-495-3261

BlakeDesjarlais.ndp.ca

✉ Blake.Desjarlais@parl.gc.ca

📘 @BlakeDesjarlaisNDP

🐦 @DesjarlaisBlake

